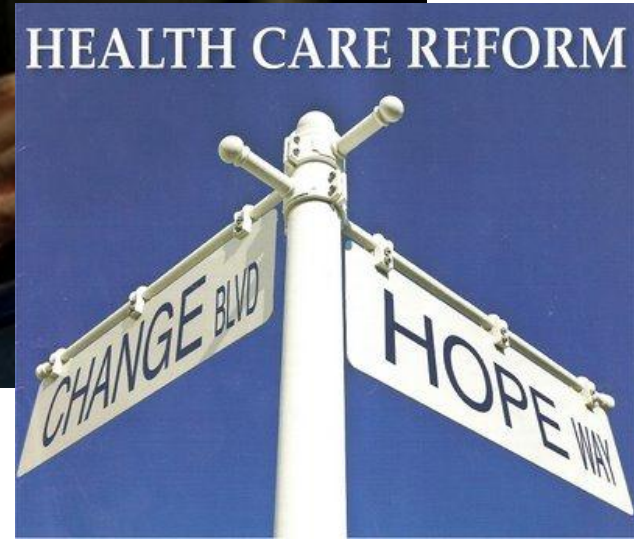


# The Engagement Cascade: Bringing the Gaps to Light

Kathleen Clanon, MD  
Clinical Director  
Pacific AIDS Education and Training Center

# Times of Great Change:

Farthest reaching health law since Medicare and Medicaid in the 1960s.

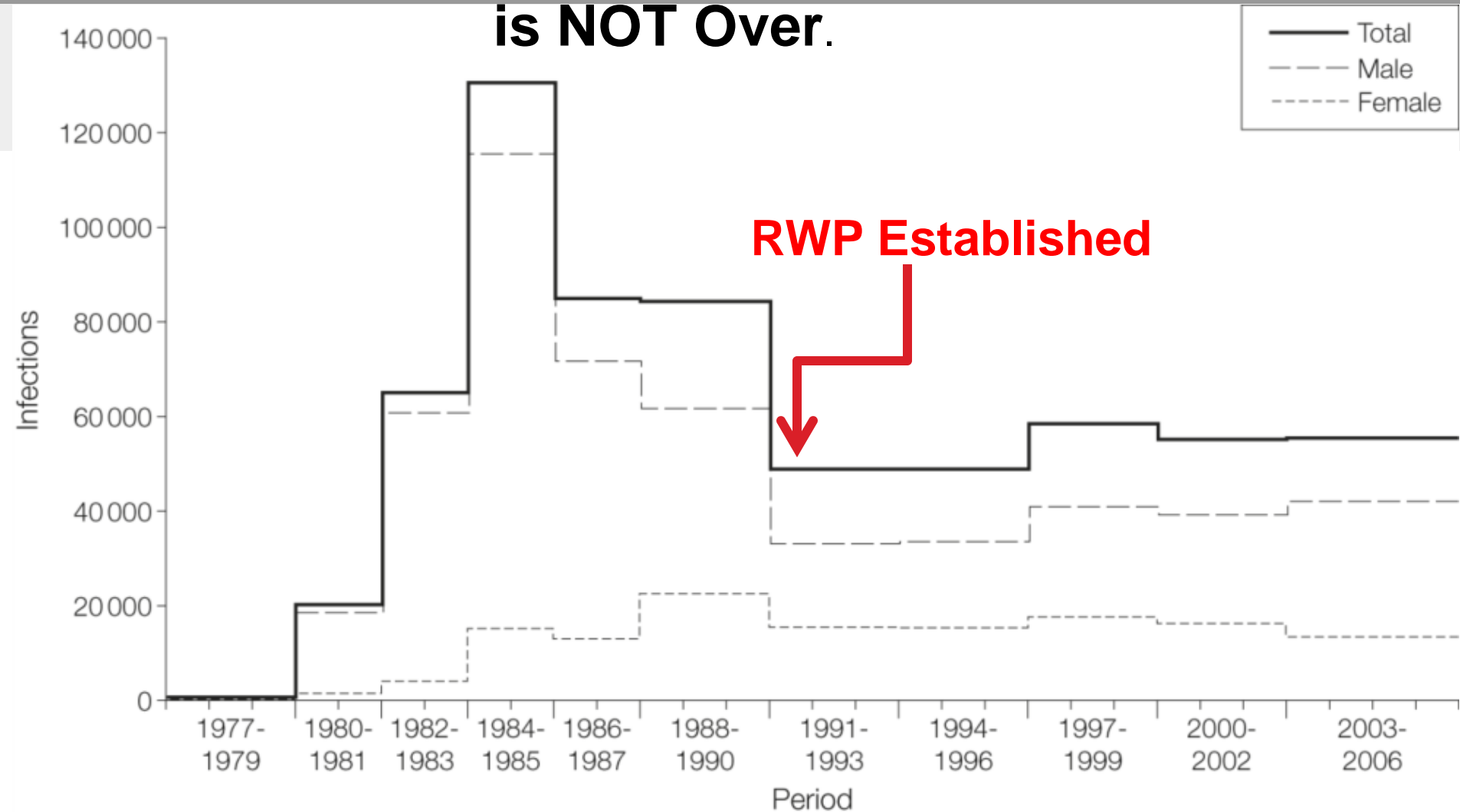


# Dramatic Decline in HIV Deaths





# Incidence of HIV in the U.S: AIDS is NOT Over.



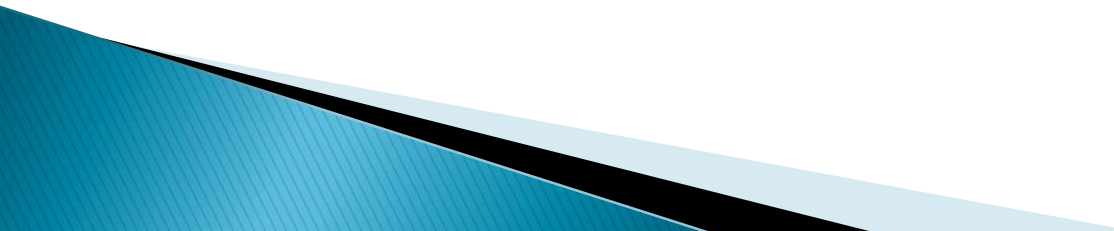
assumed to be approximately constant.



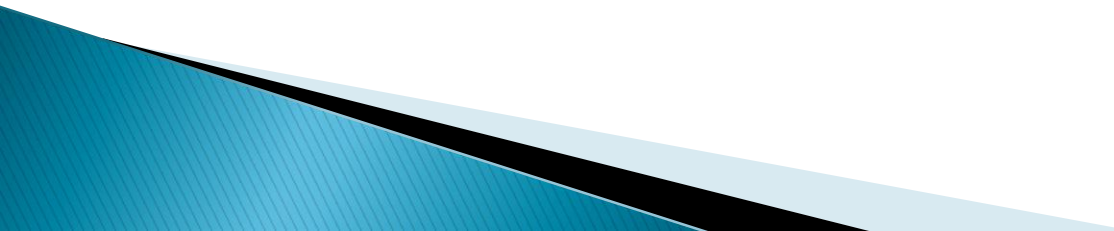


**Why Are You Here?**

# What Keeps You in this Work?

- ▶ Honoring people I lost.
  - ▶ Working against stigma and injustice.
  - ▶ Great coworkers, stimulating work.
  - ▶ I need the money.
- 

# What is the Most Important Thing We Need to do to Reach an AIDS Free Generation?

- ▶ More funding for prevention
  - ▶ Reduce Stigma
  - ▶ Make testing truly routine
  - ▶ Tighter linkages to care for HIV positive people
- 



# Continuum

## Engagement in Care

**Not in  
Care**



**Fully  
Engaged**

Unaware of HIV Status (not tested or never received results)	Know HIV Status (not referred to care; didn't keep referral)	May Be Receiving Other Medical Care But Not HIV Care	Entered HIV Primary Medical Care But Dropped Out (lost to follow-up)	In and Out of HIV Care or Infrequent User	Fully Engaged in HIV Primary Medical Care
---	---	--	---	---	---

**Non-engager**

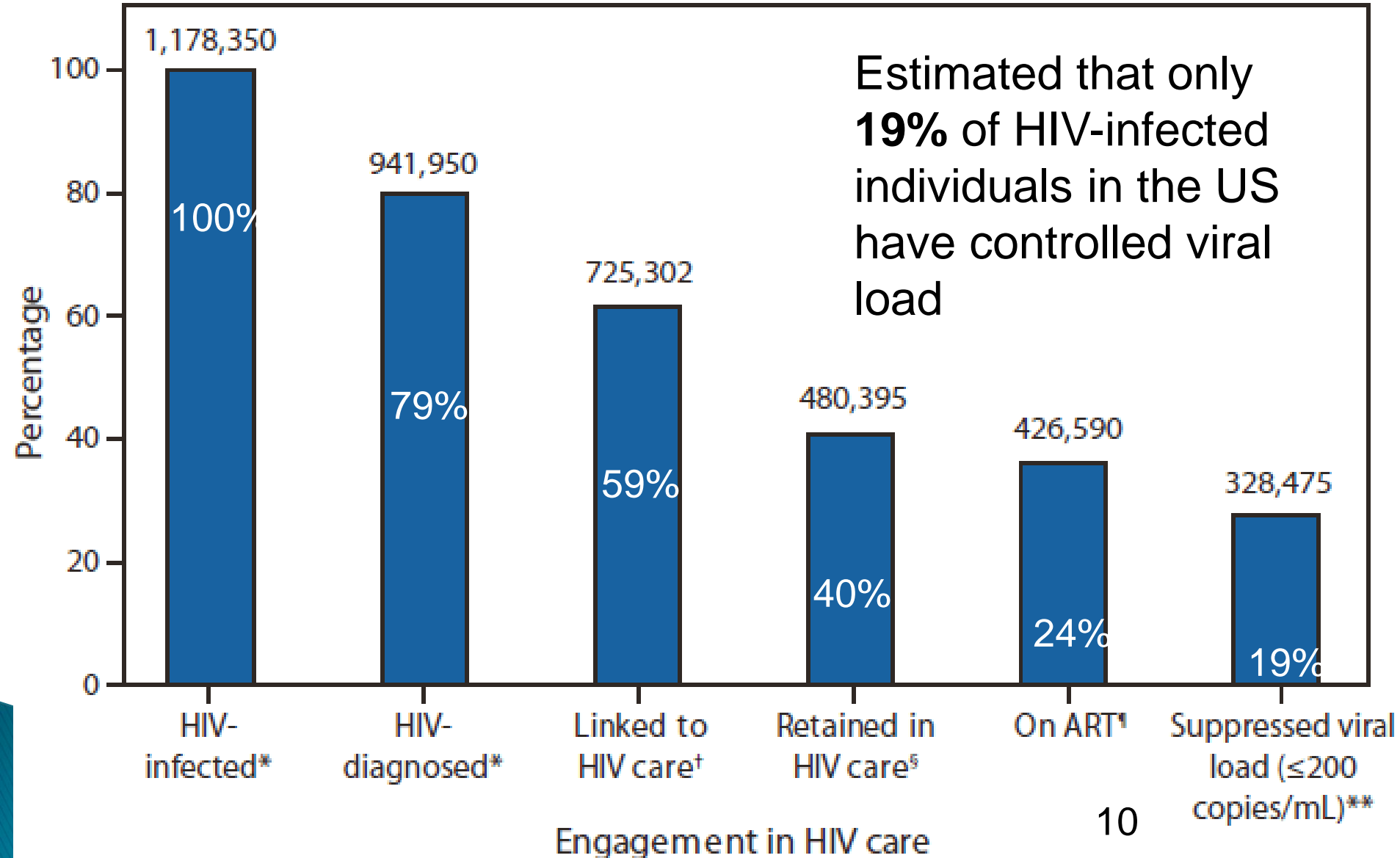
**Sporadic  
User**

**Fully  
Engaged**

*Health Resources Service Administration (HRSA)*

# Gardner Cascade

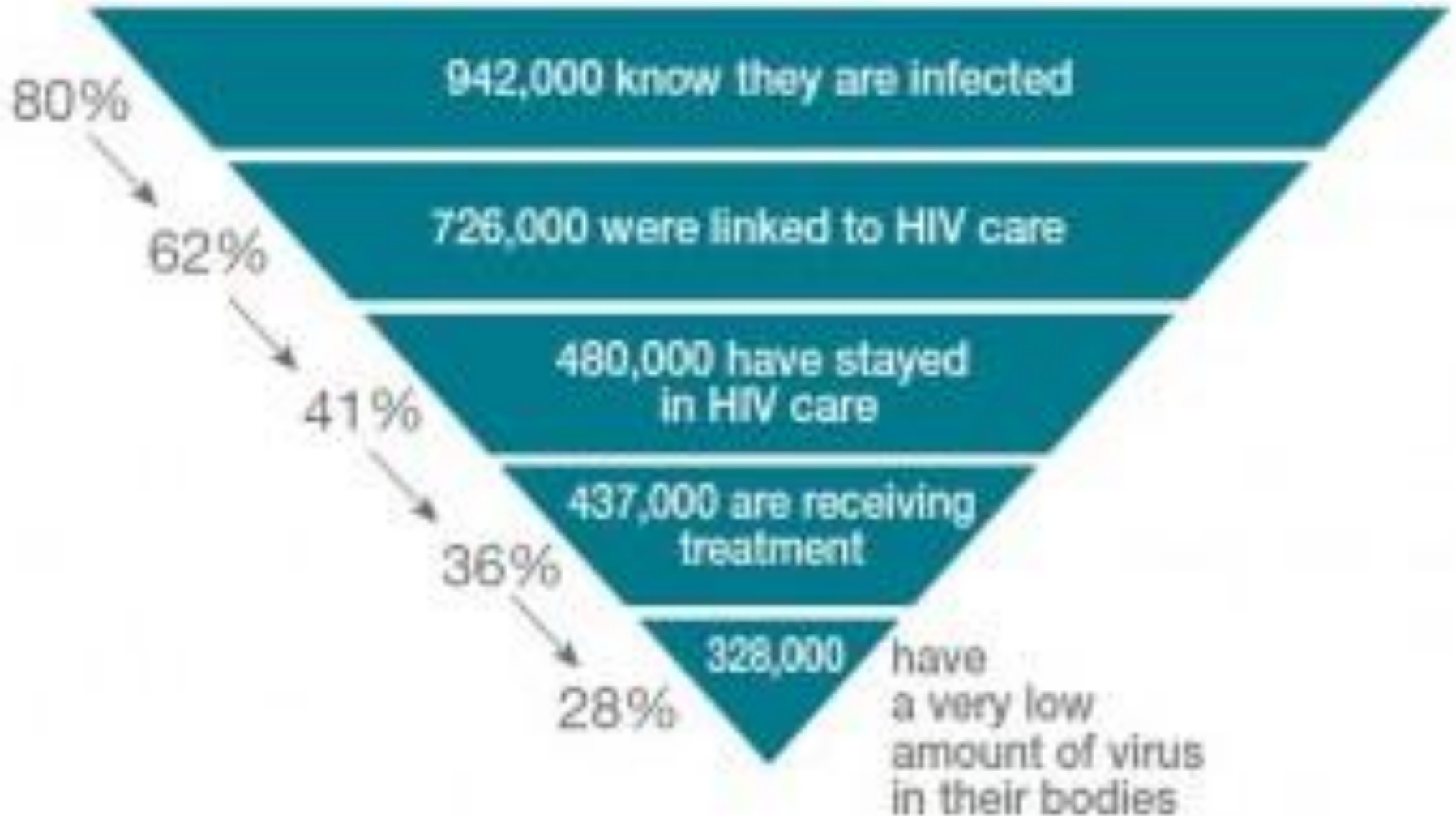
CID 5/11



# CDC's Similar Analysis

## MMWR 12/11

Out of the more than one million Americans with HIV:



# Cascade is Worse for Some....



**For Immediate Release:**

Friday, July 27, 2012

**Contact:**

National Center for HIV/AIDS, Viral Hepatitis,  
STD and TB Prevention

404-639-8895, [NCHHSTPMediaTeam@cdc.gov](mailto:NCHHSTPMediaTeam@cdc.gov)

## **African-Americans and younger people least likely to be successfully treated for HIV**

Only a quarter of all Americans with HIV have their virus under control, and African-Americans and younger people are least likely to receive ongoing care and effective treatment, according to an analysis by the Centers for Disease Control and Prevention. The CDC study is the first national look at the proportion of HIV-infected Americans – by race/ethnicity, age, risk group and gender – who have a suppressed viral load, which means that the virus is under control at a level that helps keep people healthy and reduces the risk of transmitting the virus to others. The study was presented today by CDC epidemiologist Irene Hall, Ph.D., at the XIX International AIDS Conference in Washington, D.C.

Using data from CDC surveillance systems, researchers examined the proportion of HIV -

# Medical Mistrust May Mediate the Relationship Between Perceived Discrimination and Adherence in Latino Men

Laura M. Bogart<sup>1</sup>, Frank H. Galvan<sup>2</sup>, Glenn Wagner<sup>3</sup>,  
Lori Mizuno<sup>4</sup>, & David J. Klein<sup>1</sup>

<sup>1</sup>Children's Hospital Boston/Harvard Medical School

<sup>2</sup>Charles Drew University of Medicine and Science

<sup>3</sup>RAND Corporation

<sup>4</sup>Bienestar Human Services, Inc.



Children's Hospital Boston





# Results:

## Bivariate Tests

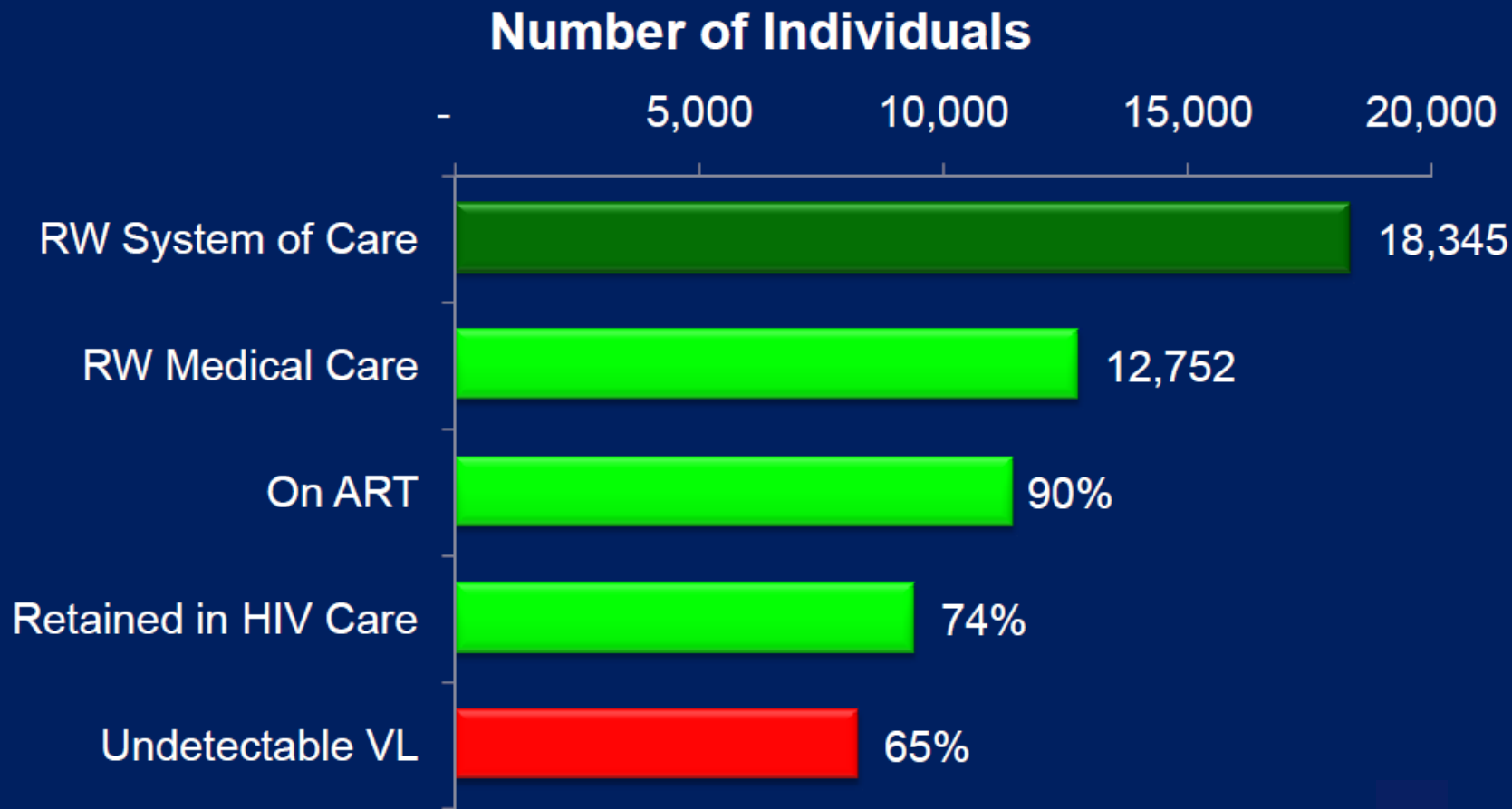
- Medical mistrust was related to nonadherence
  - OR (CI) = 0.42 (0.26 – 0.69),  $p < .001$





**The Ryan White Program has cultivated a workforce keyed to the unique racial, ethnic, sexual, and gender needs of PLWHA to effectively deliver treatment and encourage retention in care.**

# Ryan White “in Care” Treatment Cascade, 2009



# John Q. Public

- ▶ 25 yo MSM. Unemployed. Struggles with alcohol and meth. PTSD from childhood physical abuse.
- ▶ Tests at a bar venue. Testing outreach agency the AIDS Care Team refers him to BEST HIV Clinic, appt in two days.
- ▶ He does not show up at clinic.

**In your community, who is responsible for a next step?**





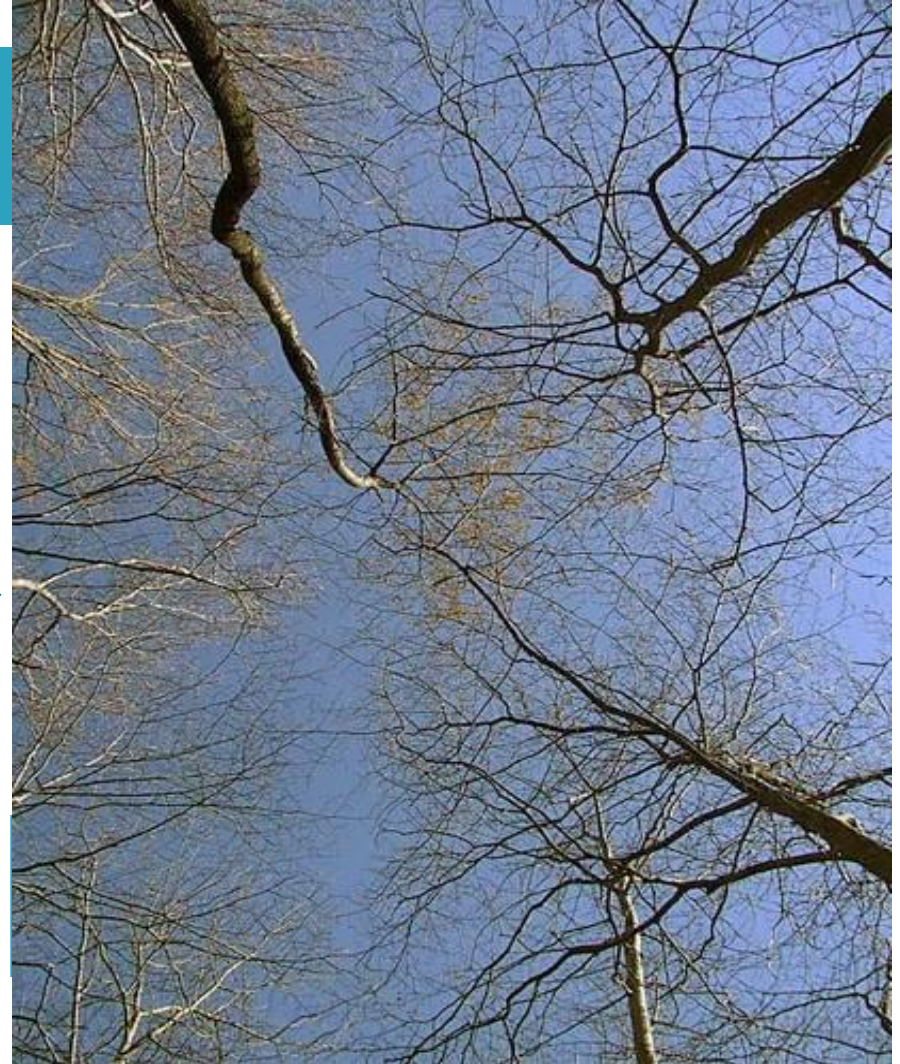


MIND THE GAP

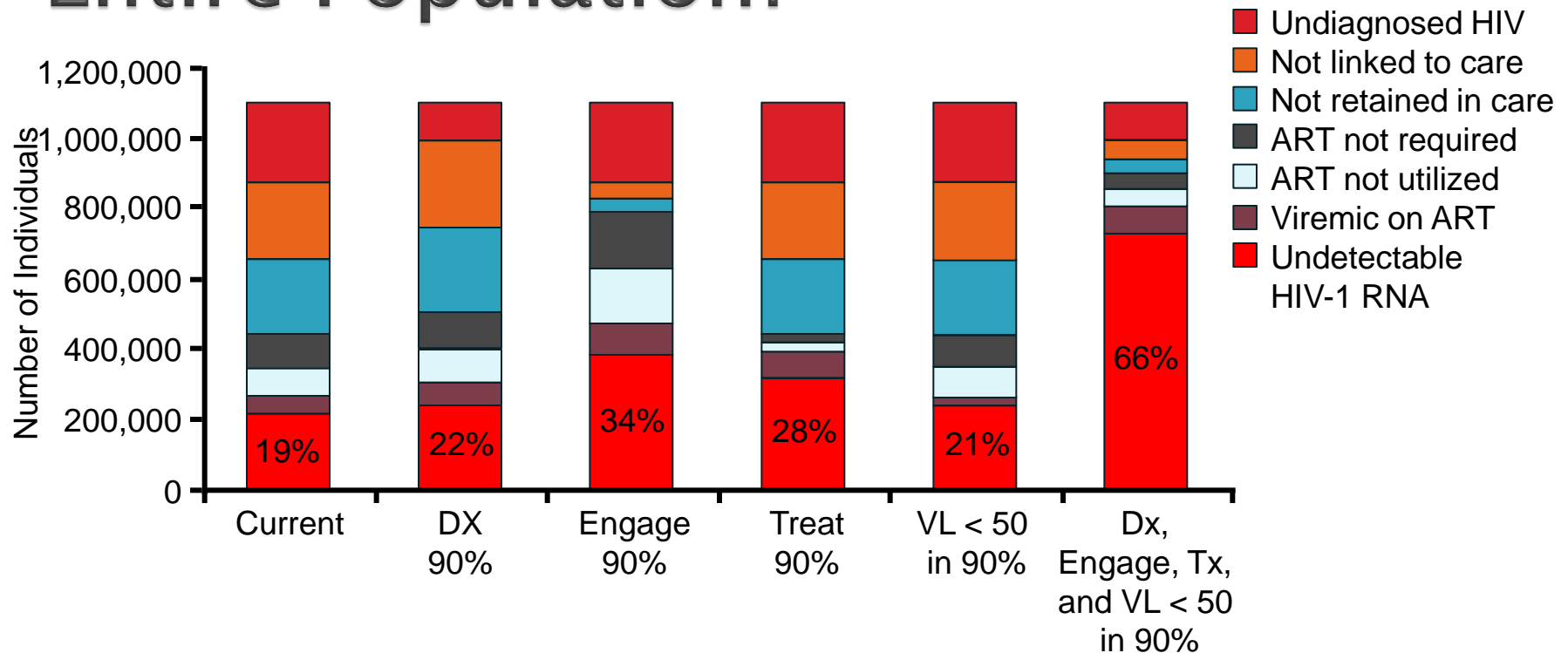


# Time for a Paradigm Shift.....

Increasing  
Interconnectedness



# What Will It Take to Substantially Reduce HIV Transmission in an Entire Population?



Answer: Treatment AND Prevention

# Los Angeles County Conceptual Model for Continuum of HIV Services



# New Opportunities

- ▶ Linkage to care “SWAT Teams”
- ▶ Incentives for clients to attend care (contingency management)
- ▶ Stronger messaging to clients about treatment
- ▶ Better partner testing
- ▶ More use of PEP/PrEP
- ▶ Collaborations with senior, substance abuse, mental health and other non-HIV services
- ▶ Trusting and challenging clients more.....



**THE  
BEGINNING  
OF  
THE  
END  
OF  
AIDS  
STARTS  
WITH  
YOU**

(con  
Conve